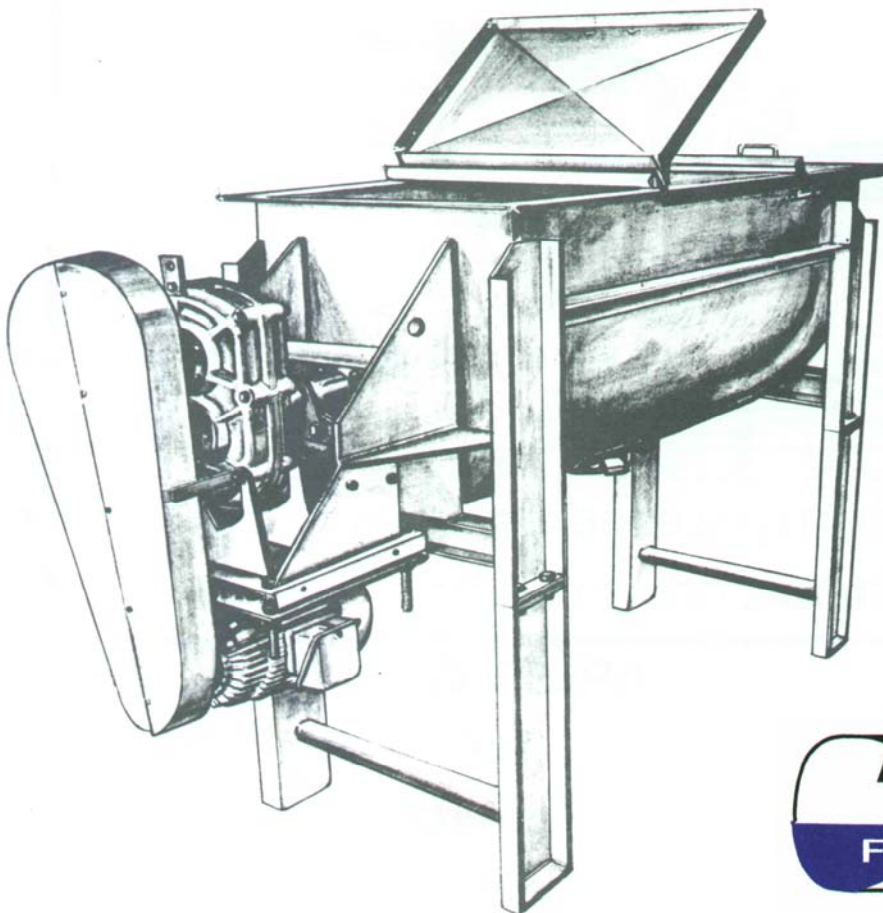


# ***ARIES STEAM-HEATED SLUDGE DRYER***

- **Aries steam-heated sludge dryer will reduce sludge disposal costs up to 70%**
- **Minimal organics volatilization with low pressure steam heat**
- **Low maintenance design**
- **Evaporates 10% of sludge per hour with 75% steam efficiency**
- **T304SS construction with steam jacket rated at 100 psi at 350°F with A.S.M.E. code stamp**
- **Heavy duty double ribbon blender and shaft for uniform drying of sludge and sludge discharge**

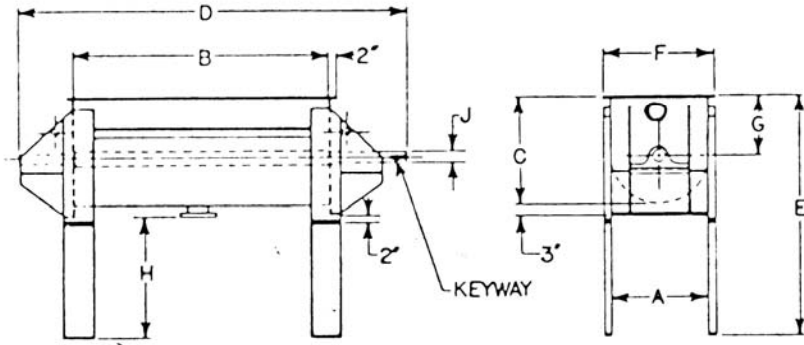


- **Slide paddle valve on center bottom discharge port**
- **Exhaust vent flange on end plate**
- **Outboard bearings and split packing glands**
- **Top cover safety interlock switch**

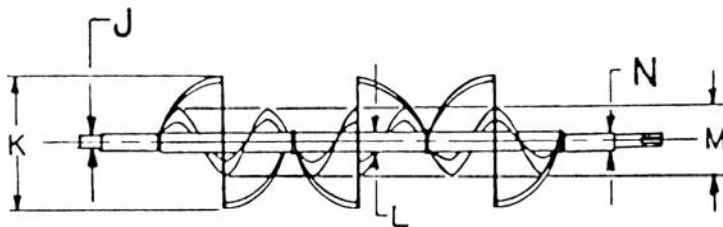




## **STEAM-HEATED SLUDGE DRYER SPECIFICATIONS**



TROUGH diagram



AGITATOR diagram

Cu Ft.	Gal.	A	B	C	D	E	F	G	H	J	K	L	M	N
4	30	18	24	22	50	37	20	13	13½	1-15/16	17½	2-3/8	9	2¼
14	105	24	48	28	86	69	28	16	38	1-15/16	23½	2½/40	12	2¾
24	180	26	66	30	105	71	30	17	38	2-15/16	25½	3/40	13	3½
36	270	30	78	34	117½	75	34	19	38	3	27½	4/40	15	3-7/16
55	410	34	90	39	129½	80	38	22	38	3-7/16	33½	6x3/8	17	3-7/16

**ARIES STEAM-HEATED SLUDGE DRYER WILL  
REDUCE DISPOSAL COSTS UP TO 70%**

Aries Chemical supplies equipment for use in industrial water treatment systems.  
Call for additional information on our products and services.

### **ARIES CHEMICAL INCORPORATED**

P.O. Box 519, 1 Depot Street  
Beaver Falls, NY 13305  
Tel: 315-346-1489 Fax: 315-346-1658  
E-mail: aries@arieschem.com